

WEST DULUTH IN DAWN OF A NEW CYCLE

A Prosperous Business, Manufacturing and Residence Section of Greater Duluth

West, from Polk Street to Roosevelt Street.
A 4-foot plank walk on the south side of Roosevelt Street, from Sixty-second Avenue West to Sixty-third Avenue West.
A 4-foot plank walk on the west side of Sixty-second Avenue West, from West Greene Street to Bristol Street.
A 4-foot plank walk on the east side of Sixty-first Avenue West from Raleigh Street to a point 300 feet northerly of Polk Street.
A 4-foot plank walk on the north side of Redruth Street, from Fifty-eighth Avenue West to Fifty-ninth Avenue West.
A 4-foot plank walk on the north side of Redruth Street, from a point 150 feet west of Fifty-ninth Avenue West to Sixty-ninth Avenue West.
A 4-foot plank walk on the east side of Sixty-second Avenue West, from Greene Street to Bristol Street.
A 6-foot plank walk on the north side of Redruth Street, from Sixty-seventh Avenue West to Sixty-eighth Avenue West.
A 12-foot cement walk on the west side of Central Avenue from Nicollet Street northerly 150 feet.
A 12-foot cement walk on the west side of Central Avenue from Nicollet Street to Main Street.
A 5-foot cement walk on the west side of Fifty-first Avenue West, from Roosevelt Street to Main Street.
A 5-foot cement walk on the west side of Fifty-fourth Avenue West, from Nicollet Street to Main Street.
A 5-foot cement walk on the west side of Fifty-second Avenue West, from Ramsey Street southerly 100 feet.
A 5-foot cement walk on the westerly side of Sixty-first Avenue West, from Greene Street to Bristol Street.
A 5-foot cement walk on the east side of Fifty-third Avenue West, from Roosevelt Street to Main Street.
A 5-foot cement walk on the northerly side of Highland Street, from Fifty-sixth Avenue West to Fifty-seventh Avenue West.
A 5-foot cement walk on the east side of Fifty-seventh Avenue West, from Raleigh Street northerly 250 feet.
A 5-foot cement walk on the west side of Fifty-seventh Avenue West, from Roosevelt Street to Bristol Street.
A 5-foot cement walk on the northerly side of Ramsey Street from a point 50 feet west of Fifty-first Avenue West westerly 50 feet.
A 5-foot cement walk on the west side of Fifty-seventh Avenue West, from Highland Street to Medina Street.
A 5-foot cement walk on the east side of Fifty-second Avenue West, from Ramsey Street southerly 100 feet.

STREET PAVING PROGRAM.

Central Avenue will be paved from Cody to Duluth, Minnesota & Northern right-of-way, one mile, with concrete.
Grand Avenue from Twenty-eighth to Fifty-fourth Avenues West, a distance of one and one-half miles, with brick.
Fifty-ninth Avenue West to Main Street, two blocks, with concrete.
Fifty-eighth Avenue West from Grand Avenue to Main Street, with concrete.
Getchell Road will be regraded from Sixty-third Avenue West for half mile to bridge at Kean creek.
Then, several of the old bridges will be removed by fillings.
Fifty-seventh Avenue West, between Main and Raleigh Streets; Grand and Sixty-second Avenues West; Oneota Street at Forty-third Avenue West, and a start will be made on the fill at Seventy-first and Grand Avenues West.
With these additional improvements, and the contracts that have been let, and the work now under way, West Duluth will be in a class all its own in paved streets, cement and plank walks.

WEST DULUTH'S PUBLIC SCHOOLS

ONE of the main windows to Duluth's public school system is that of West Duluth—the Denfeld high and Irving junior high and six modern, substantial grade school buildings. A public school system that is drilling into the rising generation advance knowledge, keeping up with the spirit of the age in which they live, giving the pupils knowledge of the progress of the times, the true value of an education that prepares the mind for the daily tasks after the close of school days, for the real battle of life, an educated mind need never be shut within the limits of any "job." The outlook is always theirs, if they but take the trouble to go to the windows. The public school system of West Duluth keeps the windows of the mind and soul open to the sunlight, and keeps them vigorous and clean.

DENFELD HIGH SCHOOL.

This is a modern two-story and basement structure, built of brick with stone trimmings, at a cost of \$215,000. The Denfeld high is located at Fifty-fifth Avenue West, between Elinor and Sixth Streets. The building site is 480 feet long and 250 feet wide and cost \$9,250, which includes the Ely grade school building site.
The Denfeld high school has an enrollment of three hundred and seventy-five, presided over by the following corps of teachers, graduates of colleges and universities, which has equipped them for their chosen work: S. A. Foster, principal; J. R. B. Adair, chemistry; C. B. Avery, manual training; Pearl M. Bellinger, German history; Florence Bernhardt, Latin-French; Jessie Guild, art; Rose Guinn, English-algebra; Pearl C. Hansen, algebra; D. W. Hiestand, Latin-geometry; Leon C. High, English; Ruth Mather, history-English; W. A. Nonnamaker, physiology; Esther A. Perusse, sewing-shorthand-typewriting; W. H. Stone, manual training; Henry J. Sullivan, manual training; Marcus H. Walker, commercial; M. Irene Walker, cooking.

ELY GRADE SCHOOL.

A modern two-story and basement, brick, erected in 1907 at a cost of \$57,500. Located on Fifty-fifth Avenue West, between Elinor and Sixth Streets. The school enrollment is 366, with the following corps of instructors: S. A. Foster, principal; Margaret Cunneen, sixth; Louise Delaplaine, fifth and sixth; Nellie Ryan, fourth and fifth; Estelle McNally, fourth; Lelah Walrod, third; Emma Olson, second and third; Bargarina Perry, first and second; Helen Desnah, first; Anna Boardman, kindergarten; Minnie Fedi, ungraded room.

IRVING SCHOOL.

The Irving has a site of 200x250 feet, located at the corner of Nicollet and Fifty-sixth Avenue West, and cost \$20,000. The school building is a two-story and basement brick, erected in 1891 at a cost of \$105,100. The playgrounds are ample, and it is the only school that serves penny lunches.
The Irving elementary has an enrollment of 513, presided over by the following instructors: Laura MacArthur, principal;

Elizabeth Boerner, sixth; Frances Wellington, fifth and sixth; Ebba Extrom, fifth; Christy Stoen, fourth; Ruth Hobbs, fourth; Gertrude Longstreet, third and fourth; Katherine Jones, third; Mabel Wright, second; Myrna Todd, first and second; Katherine McMahon, first; Adeline Buckley, first.

Irving junior high has an enrollment of 355: Laura Mae Arthur, principal; Minnie Bergstrom, junior high; Lucille Boyer, junior high; Mary J. Burke, junior high; Mae B. Jackson, junior high; Esther J. Lawrence, junior high; Mabel Rossmann, junior high; Ruth Stephens, junior high; Mary C. Sullivan, junior high; Mabel Thompson, junior high; Cecilia Vaughan, junior high; Grace B. Wasley, junior high.

FAIRMOUNT SCHOOL.

The building is a modern two-story and basement, brick, located at Sixty-seventh Avenue West and Redruth Street, and has a site of 200x250 feet, valued at \$6,400, while the building cost \$68,200. The school enrollment is 378, and has the following corps of instructors: Ethel M. Kuerth, principal; Christina Strom, sixth; Anna D. Kent, fifth and sixth; Susan L. Hartz, fifth; Roxa Henderson, fourth; Frances F. Smith, third; Florence H. Lindquist, third; Anna T. Hanson, second and third; Clara A. Jahn, second; Blanche M. Malory, first; Jennie E. Olson, first; Helen M. Grimes, kindergarten.

LONGFELLOW SCHOOL.

The Longfellow is a two-story brick with basement, erected in 1891 at a cost of \$71,700, while the site, 125x200 feet, located at Elinor, corner of Sixtieth Avenue West, cost \$6,500. The enrollment is 429, presided over by the following corps of teachers: Harold G. House, principal; Elizabeth H. Berg, sixth; Flora D. Gibson, fifth and sixth; Lulu J. Stobbs, fifth; Betsy N. Ductlett, fourth and fifth; Cecile Boyle, fourth; Allie B. Onskard, third; Genevieve M. Smith, second; Lillian Meinhardt, second and third; Dugrun L. Haakon, second; Marie C. Rowe, first; Eva M. Dunstan, first.

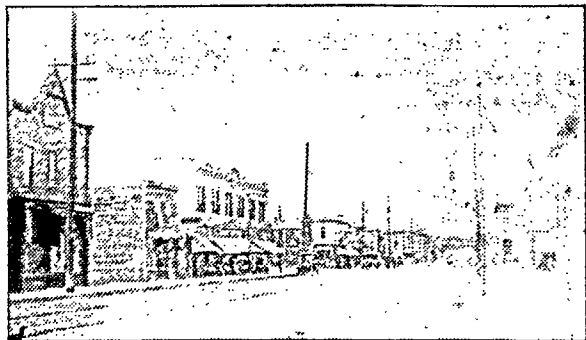
MERRITT SCHOOL.

In 1911 the Merritt, a two-story and basement brick structure, was erected at a cost of \$70,300. The building site at Fortieth Avenue West and Fifth Street, 100x200 feet, cost \$8,500. The enrollment is 378, with the following corps of teachers: George M. Paulus, principal; Mollie Astell, seventh and eighth; Grace Heydon, sixth and seventh; Florence A. Carlson, sixth; Rose B. Kohler, fifth; Clara F. Goodhand, fourth; Della F. Henne, third and fourth; Gertrude Wellington, third; Gertrude Flaherty, second; Clara Simon, first; Esther S. Mork, first.

ONEOTA SCHOOL.

This school has a building site of 200x132 feet, located at Forty-seventh Avenue West and Rene Street, that cost \$7,300, and the school building \$12,600. The enrollment is 88 and has the following teachers: G. M. Paulus, principal; Gavena M. Hall, fifth and sixth; Jane Blight, third and fourth; Letta Siring, first and seconds.

The total cost of West Duluth's school buildings is \$601,400, sites and playgrounds cost \$57,950, and the school enrollment is 2,882.



GRAND AVENUE LOOKING EAST, THE FUTURE RETAIL CENTER OF DULUTH.

WEST DULUTH'S CHURCHES

THERE are seventeen houses of worship, covering many denominations, with costly church edifices that would do credit to any city, proving that the Master's cause is in no wise neglected, as the following will prove:

Swedish Finnish Ebenezer Baptist, 517 Ramsey. Organized 1901.	Bethel Lutheran, 53rd Ave. W., Cor. Ramsey.
West Duluth Baptist, Grand Ave., N. E. 58th Ave. W.	Bethel Norwegian Lutheran, 60th Ave. W., Cor. Bristol.
St. James (Catholic), 57th Ave., W., Cor. of Kinnear.	Elim Swedish Evangelical Lutheran, 56th Ave. W., Cor. Elinor.
Swedish Christian Mission, 59th Ave., Cor. Greene.	Finnish Lutheran, 65th Ave., Cor. Nicollet.
Holy Apostle (Episcopal), 57th Ave. W., Cor. Elinor.	Immanuel Norwegian Synod Lutheran, 57th Ave., Cor. Roosevelt.
Bethany Norwegian-Danish M. E., 65th Ave. W., Cor. Polk.	Our Savior's Norwegian Lutheran, 57th Ave., Cor. Wadena.
Merritt Memorial, 46th Ave., Cor. Halifax.	St. Stephen's German Evangelical Lutheran, 69th, Cor. Raleigh.
Second Swedish (M. E.), 69th Ave. W., Cor. Bristol.	Asbury (Methodist), Raleigh, Cor. 60th Ave. W.
Hazelwood Park Presbyterian, Grand Ave., Cor. 38th Ave.	Westminster Presbyterian, 58th Ave., Cor. Ramsey.
Third Swedish Baptist, 57th, S. E. Cor. Ramsey.	

CLUBS, BENEVOLENT AND SECRET SOCIETIES

THE Western Curling Club of Duluth has a spacious building, combining curling and skating rink, located at Fifty-seventh Avenue West and Bristol Street. The membership is large and embraces all lovers of these sports.

The West Duluth branch of Duluth's public library is located on Central Avenue, corner of Elinor Street.

MASONIC ORDERS.

Euclid Lodge, No. 198, A. F. and A. M., meets second and fourth Wednesdays, West Duluth Masonic Temple.

Euclid Chapter, No. 56, R. A. M., meets first and third Tuesdays, West Duluth Masonic Temple.

Duluth Chapter, No. 59, R. A. M., meets first and third Wednesdays, West Duluth Masonic Temple.

I. O. O. F.

West Duluth Lodge, No. 168, meets every Tuesday night, Odd Fellows' Hall.

I. O. G. T. Lodge, Lystraalen No. 37, meets second and fourth Sundays, Commercial Hall.

KNIGHTS OF PYTHIAS.

Kitchi Gammi Lodge, No. 123, K. P., meets every Thursday evening in Odd Fellows' hall.

Zenith Camp, No. 50, Pythian Sisters, meets second and fourth Thursdays, Odd Fellows' hall.

MODERN SAMARITANS.

Zenith Council, No. 6, meets second and fourth Wednesday nights, Great Eastern Hall.

West Duluth Council, No. 4, meets on call.

ORDER OF FORESTERS.

Court No. 797, I. O. F., meets seconds and fourth Mondays. St. James' Court, C. O. F., meets second and fourth Tuesdays, Gilley's Hall.

Sancta Maria Court, C. O. F., No. 322, meets second and fourth Thursdays, Gilley's Hall.

ROYAL LEAGUE.

West Duluth Council, No. 255, meets second and fourth Tuesdays in Commercial Hall.

Pocahontas Council, No. 319, meets second and fourth Tuesdays, Commercial Hall.

ORDER OF MACCABEES.

West Duluth Tent, No. 2, meets every Tuesday night, Commercial Club Hall.

Minnesota Review, No. 4, W. B. A., meets first and second Tuesdays, Gilley's Hall.

St. Louis Bay Hive, M. M., meets first and third Monday nights, Gilley's Hall.